

maxi Agilia

The perfect concrete for floor slabs. MaxiAgilia is a specially designed concrete mix offering effortless floor slab construction, eliminating the requirement to power float, providing a high standard surface finish.

Three Product Types:

MaxiAgiliaMicro - MaxiAgiliaMacro - MaxiAgiliaSteel

Applications

- Domestic / Commercial Floor Slabs
- Large Scale Floor Pours
- Industrial Floors with Low Traffic
- Structural Toppings

Specification

- Minimum thickness of 75mm
- Fluidity can be maintained for up to two hours
- 28-day compressive strength of 35N
- Bespoke mix designs, created by Maxi, if you require an increased strength or a greater early strength



Process

Pumping:

- MaxiAgilia can be pumped if required.

Dappling:

- Once the correct levels have been achieved you should dapple the product immediately. The dappling is required in two directions: The first pass must be deeper than the second. The second pass should be lighter and perpendicular to the first.

Curing:

- MaxiAgilia is supplied with the required amount of curing agent. The curing agent should be sprayed over the surface – ensure complete coverage is achieved.

Post Placement:

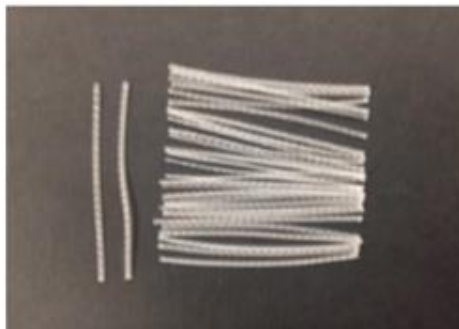
- Following placement of MaxiAgilia your surface will be suitable only for light traffic after 24 hours and should be acceptable to work on following 72 hours.

Products Explained

- MaxiAgiliaMicro (Non-Structural)

- MaxiAgiliaMacro (Structural)

- MaxiAgiliaSteel (Structural)
 - Steel fibres can also be used as structural topping alternative to Macro Fibres



NHBC Guidance table for concrete toppings above beam and block floors

(Applicable from 1 January 2018)

	Suspended concrete beam and concrete block floor			
	Micro-fibre (class 1)	Macro-fibre (class 2)	Steel Fibre	Steel Mesh
a) Load-bearing block with compressive strength $\geq 7.3\text{N/mm}^2$ or type SR or type RR (Declared by manufacturer)	YES	YES	YES	YES
b) Non load-bearing block	NO	YES (2)	YES (2)	YES
	Suspended concrete beam and EPS/XPS block floor			
	Micro-fibre (class 1)	Macro-fibre (class 2)	Steel Fibre	Steel Mesh
a) Load-bearing block (Type R2 declared by manufacturer)	YES	YES	YES	YES
b) Non load-bearing block (Type R1 declared by manufacturer)	NO	YES (2)	YES (2)	YES